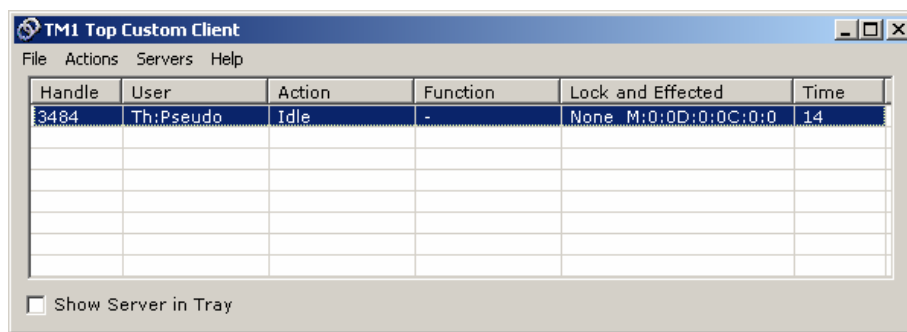


TM1 Top Custom Client

Shortcut, Admin host and Features Guide

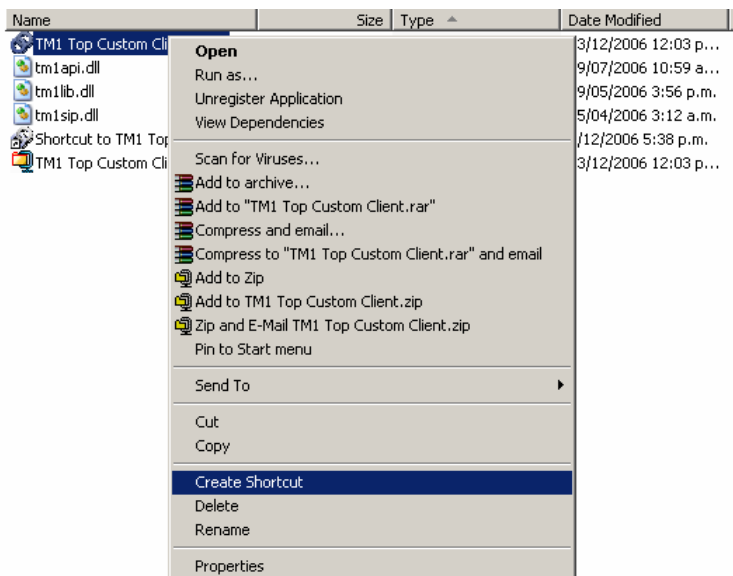
TM1 Top Setup Process	2
Features and Functionality	4



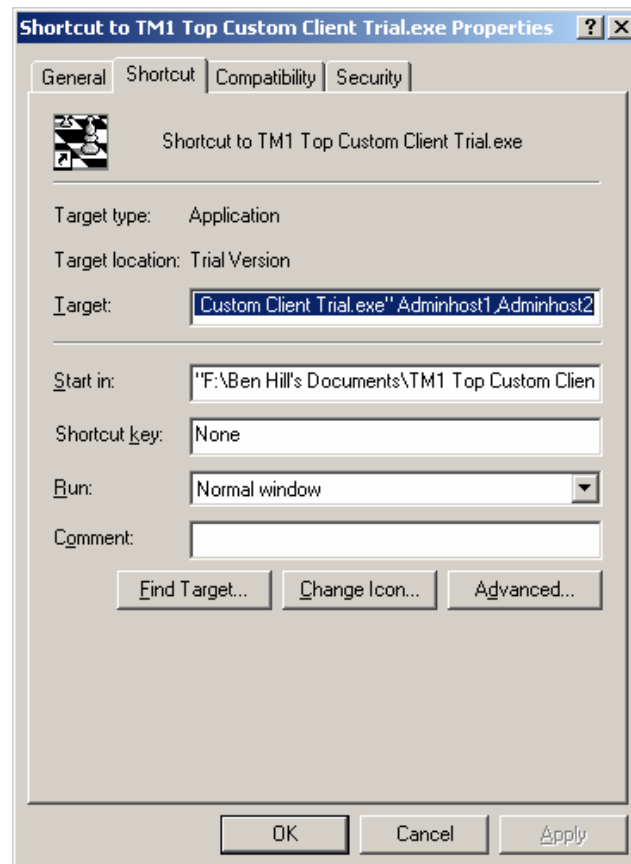
TM1 Top Setup Process



1. Extract the Contents of the Zip Archive to the desired directory
2. Copy the files listed below from your old TM1 top Directory into the new TM1 Top Directory Replacing the Existing Files:
 - a. Tm1api.dll
 - b. Tm1lib.dll
 - c. Tm1sip.dll
3. Right Click on the Executable and create a shortcut.



4. Right Click on the Short cut and enter the properties menu
5. Add any Admin hosts separated by a comma “,” after the text in the Target Field, you may also add the optional “-silent” argument for if you would like it to open straight to task bar.
6. Double click the shortcut to launch.



Features and Functionality

Features:

- Traffic Lighting per server in the task bar
 - Green – Idle Server
 - Orange/Yellow – Users running View or Non locking Process
 - Red – Complete lock either by Replication, Process or Rule Save
- Multiple Admin hosts with Manny Servers
 - (including Admin hosts with Servers with the same names)
- Clicking Server Icon Bring up that Specific TM1 Server
- "-silent" parameter can be given on startup on command line to minimize on load
- Client Actions Logging (Taken out)
- Client Logon/logoff logging
- Notify Balloon when a User initiates a lock (XP Pro only). (Taken out)
- The app remembers whether to Show a Server as an icon or not for next time you start it
- Ability to "Kill" a users process (Limited to TM1 Tops original Functionality)

Known Issues:

- Resets when a server is shutdown (freezes for approx 30seconds)
- Can crash when a server is shutdown